

Artec Space Spider Getting Started

Dear Customer,

Thank you for choosing Artec Space Spider for your application.
We hope you will enjoy scanning with your new device!

Artec 3D is committed to providing our clients with the best professional 3D scanners. We are always working hard to make our products even better, offering regular updates and new solutions. To keep on top of all the latest news and special offers, please visit our website www.artec3d.com.

This booklet is a quick guide to getting started. For full in depth instructions, please visit our Support Center www.artec3d.com/support or write to us at support@artec-group.com.
We are always glad to help!

Happy 3D scanning!

Contents

Installation	1
How to take care of your Artec Space Spider 3D scanner	3
1. Safe handling	3
2. Optical parts	4
3. Standby position	4
4. Transportation	5
5. Storage	6
6. Accessories	7
7. Recommended operating conditions	8



Installation

To use your Artec Space Spider, you need to have an account on my.artec3d.com. If you don't have one yet, please sign up today. Signing up is easy, fast and free.



You can read more detailed instructions online in the Artec Support Center:

www.artec3d.com/support

If you need any assistance with installation or scanner activation, please feel free to contact your local reseller.

If you're a new customer:

1. Download and install the Artec Installation Center (AIC) from the my.artec3d.com homepage.
2. Run the Artec Installation Center and log in with your my.artec3d.com account details.
3. Plug your Artec Space Spider into the computer.
4. Click on Activate, then download and install Artec Studio.

If you're an existing customer:

1. Run the Artec Installation Center.
2. Plug the 3D scanner into the computer.
3. Click on Activate and you are ready to go.

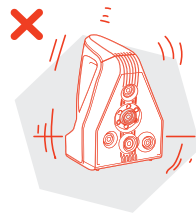
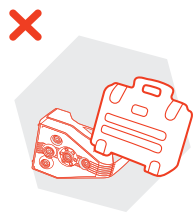
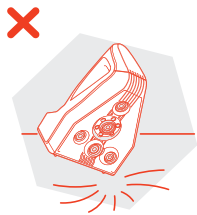
How to take care of your Artec Space Spider

Space Spider is a high precision, high accuracy metrology grade instrument. As with all devices of this kind, careful handling and correct storage is crucial. Following our simple instructions will guarantee the perfect working order and an extensive lifetime of your 3D scanner.

1. Safe handling

Avoid inflicting any impact, vibration or pressure on the device.

DO NOT, under any circumstances, try to open the scanner, remove any of its parts or tamper with it any other way. This may lead to the malfunctioning of the scanner.



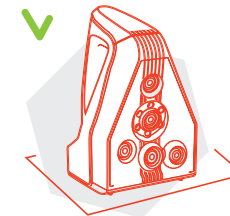
2. Optical parts

We strongly advise that you refrain from touching the optical parts of the scanner.



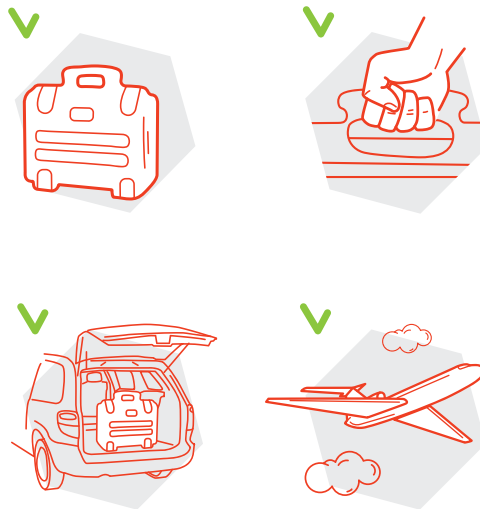
3. Standby position

When taking a break from scanning, make sure to place Space Spider in the upright position, preferably on a non-slip mat. This is the most stable and secure position for the scanner and reduces the risk of the device being knocked over.



4. Transportation

Transportation of Space Spider must be carried out only in the Space Spider hard case. The Space Spider hard case has been specially engineered and thoroughly impact tested by Artec in order to protect the device from any external damage during shipping or transportation.



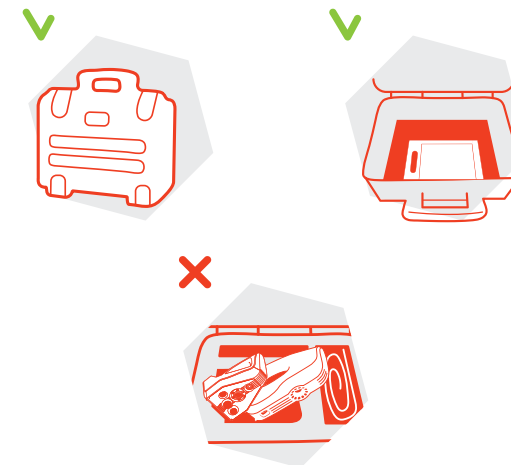
5. Storage

When not using your Space Spider, please keep it safely stored in the hard case. The foam sections should not be modified or taken out of the hard case.

Space Spider should always be fully encased on all sides by the foam when the hard case lid is closed.

Please do not store any additional items in the Space Spider hard case.

The calibration kit should be placed underneath the layer of foam and should not be located next to the Space Spider.



6. Accessories

Please do not store any additional scanning accessories, such as the battery pack, in the Space Spider hard case or packaging. Do not, in any way alter the hard case or the packaging. This includes, but is not limited to, removing the foam from the hard case, dropping and in any other ways mishandling the packaging and the hard case.

Make sure to use only the original Artec cables to prevent your equipment from malfunctioning.

Important note on battery pack

Only use the Artec power supply and the original cables provided with the scanner.

Keep the battery pack power supply separate and do not attempt to plug it into the Space Spider scanner.

 Plugging the battery pack power supply into Space Spider can cause it to malfunction.

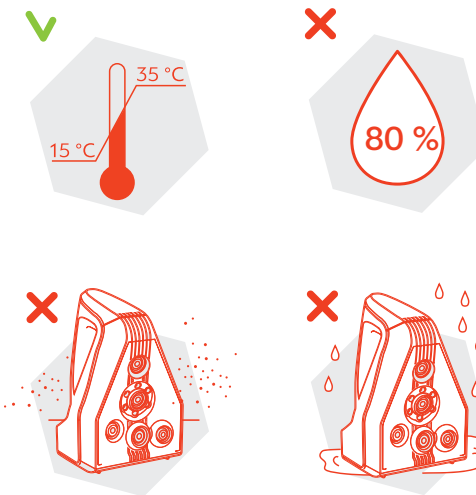
7. Recommended operating conditions

Temperature: from +15 °C to +35 °C

Humidity: non-condensing, up to 80%
for temperature 25±10 °C

Exposure to the following factors could lead to a deterioration in the device's performance:

- Condensation
- Direct exposure to any liquid
- Dust



If you have any questions about Artec 3D products, please feel free to contact us at support@artec-group.com.

We hope you enjoy scanning with Artec Space Spider and wish you every success with your application!

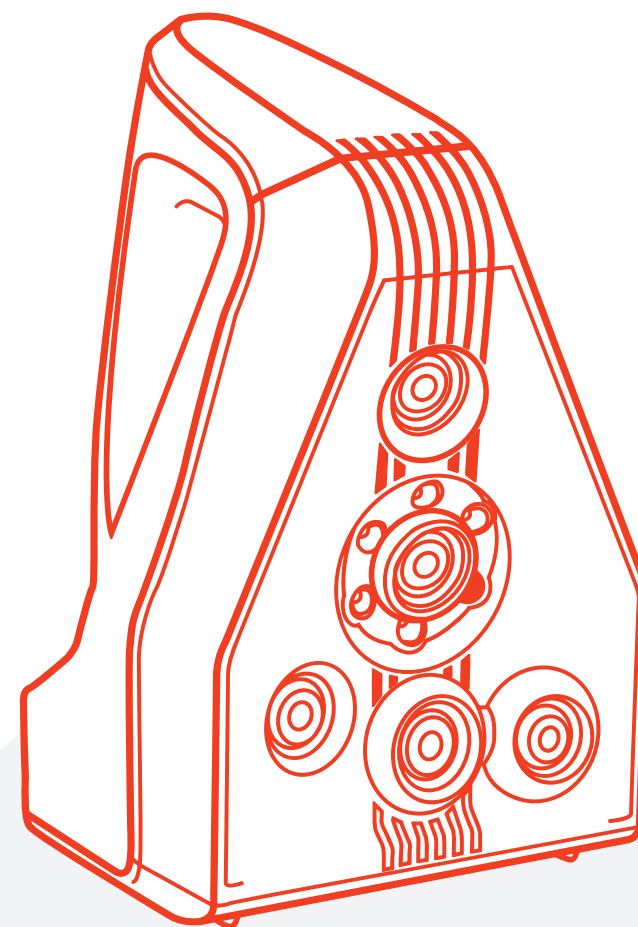
We will be happy to assist you!

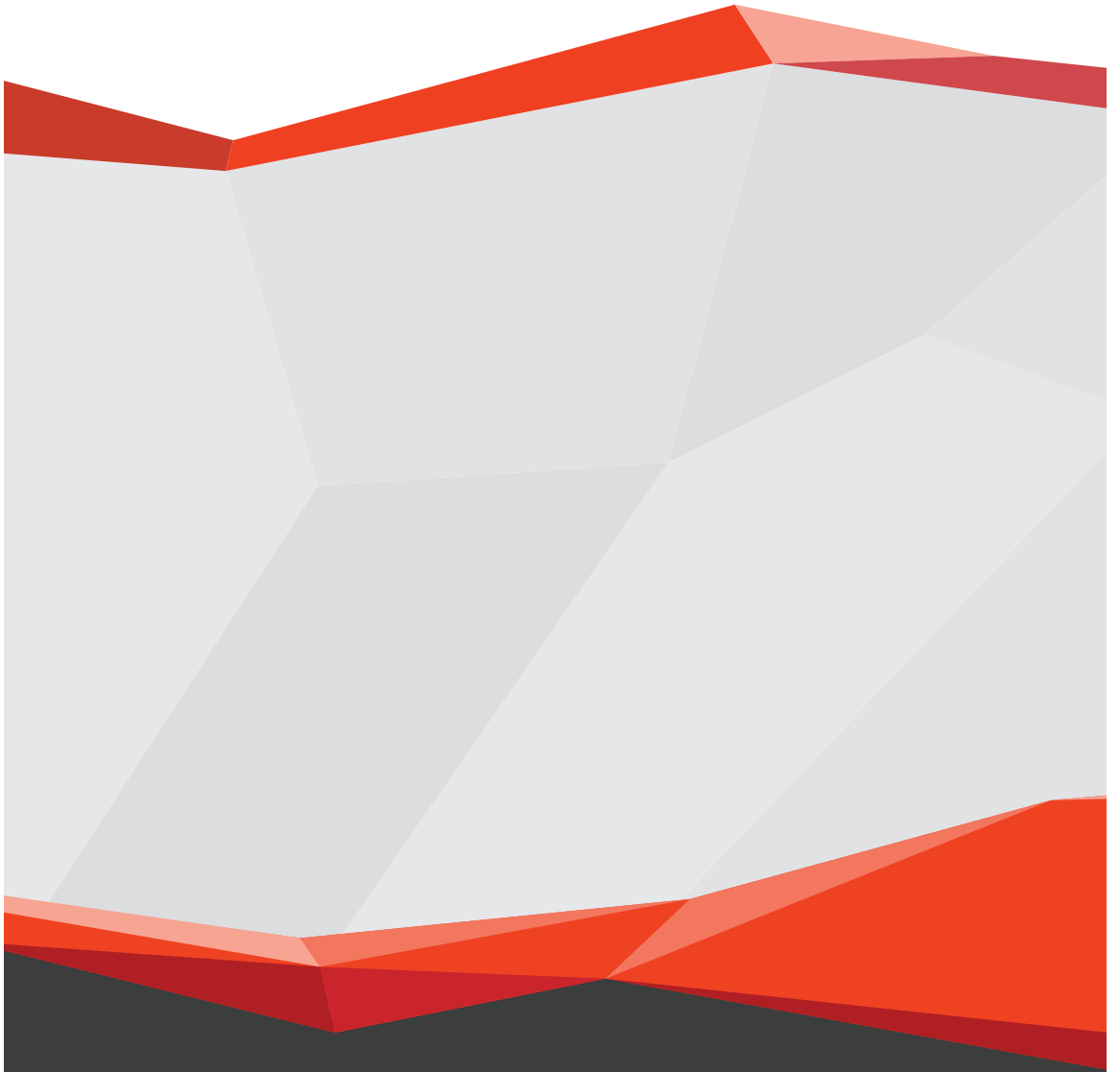
Follow us:

-  www.facebook.com/Artec3D
-  www.twitter.com/Artec3DScanners
-  www.linkedin.com/company/2498672
-  www.youtube.com/user/artecgroupinc



Notes





www.artec3d.com